

GATEKEEPER WHEEL OF LIFE PROJECT

NEWSLETTER



*York City: the Minster Chapter House ceiling
and guardian trees of the Rivers Ouse and Fosse.*

2017-2019

GATEKEEPER TRUST

WHEEL OF LIFE PROJECT OVERVIEW NEWSLETTER, 2017-2019

The Wheel of Life project grew out of the work of Susie Straw and Clare Higson, who created an annual programme (ELSD - Encircling the Land with Sacred Dance) of circle dancing and pilgrimage round Britain. In 2016 the trust was asked to re-new the original vision of 'turning the wheel' of the British landscape, through local group events, facilitated through a core group who began the Gatekeeper Wheel of Life Project programme in 2017. Since then, local areas have been explored, their symbology explored within cities and sanctuaries responding with our hearts to the spirit of love within the landscape, following the times of the full moon.



Encircling the Land with Sacred Dance, Ely Cathedral, with Susie Straw.

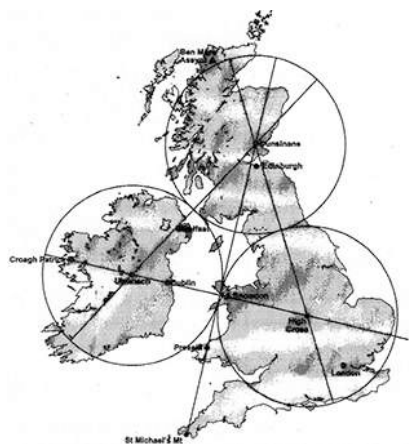
This newsletter presents a theme design rather than a chronological report, weaving the local groups' short reflections, photos, poetry and graphics which seek to interpret the cyclic nature of life within ourselves and in Nature as our mirror and teacher. It is the story of a dedicated group of people seeking to answer the spirit of the land with creative activities and pilgrimage. To complete our holistic overview, at the end you will find maps, designs for interpreting the ancient concept of the 'wheel of life'; and links to some links to previous research into landscape zodiacs, and where to find them. It is hoped that together we can develop our understanding of how temples and earth structures were used for ritual and culture building purposes, and what they might mean to us today as models of transformation, vision and harmonic growth.

The inspiration also came from many sources of research:

In 2016 we had a pilgrimage in the Isle of Man, and this was followed with a Light Link-up between pilgrims within the three key landscapes of the British Isles: England, Ireland and Scotland. A small group travelled to key stone sanctuaries on the Isle of Man and recorded their visions. The tradition on the island is that if you go up its mountain, Snae Fell, you will be able to see all six kingdoms including the Kingdom of Heaven. The mythology is reflected in its symbol, signifying a mystery behind its landscape position in the 'Hesperides':



[mons.wikimedia.org/w/index.php?curid=32029401](https://commons.wikimedia.org/w/index.php?curid=32029401)



*The mythical three 'Sacred Isles of the Hesperides' of classical texts hold a key to the landscape geometry that is being researched by small groups.
(See our pages in the previous years' Gatekeeper Magazine)*

The Project has developed these last three years with a variety of activities, as we marked the full moon in each of the zodiac areas of the British landscape. In 2016 a Pilgrims' Weekend at Purley Chase near Atherstone (Arthur's Stone?) explored the key notions of the 'wheel of life' as an energy design that is at the heart of life and our evolution on our planet.

PURLEY CHASE

We began the whole project in 2016 at a weekend at Purley Chase Centre, near High Cross and Hartshill, at the centre of the British landscape zodiac. Dancing Paneurhythmy seemed to anchor a deep commitment to the dialogue of love for the earth, and its message of wisdom, beauty and harmony for mankind:



Purley Chase Centre, 2016.



*After an attunement with a map and candle mandala,
A pilgrimage to Hartshill and High Cross with flowers and lanterns.*

The Trust's aim is to promote *'the investigation of the origin and significance of temples generally, landscape temples, holy places, earth structures and their layouts, and all beneficial forms of natural and metaphysical study...'* In this respect we find that the sages of old seemed to know how the cycle of initiation within human consciousness could be triggered in the landscape, and who created symbolic training paths, using caves, rocks, rivers, hills and stone circles. As a modern investigation into the star map landscape temples, we learn to follow the sages of old in learning to listen to Nature with all our senses, to test our intuition, and to express tentatively the needs of Nature and the landscape through art forms and pilgrimage that suit us best as individuals.

EMERGING THEMES

Some themes for future events have emerged in the process, 2018 Seeds of the next year's Pilgrims' Weekend came from the pilgrimage to the River Avon in the Pewsey Valley at the Annual Conference weekend in 2018. The mandala concluding the weekend was composed of leaves and mementos from the river blessing, and the walkers sang the song they had composed.



The first pilgrimage of the new Celtic year's Wheel of Life programme was to Alton Barnes and Alton Priors, the stone circle beneath All Saints church, and the five springs of the River Avon's source.



You will enjoy the article below about the springs at the source of the River Avon:
<https://insearchofholywellsandhealingsprings.com/tag/alton-priors/>

Throughout our first three years' programmes, new seeds for the Aquarian age appear to be emerging and clarifying: creative innovation, group consciousness and diversity are key to what we have been doing. Activities included river walks, peace lantern walks, peace lanterns and dancing in cathedrals (St David's, Lincoln and Wells), city chakra walks, sacred circle dancing in churches (Otley, St Lawrence's Winchester, St Mary's Paddington), Paneurhythmy dancing, mandala making, a labyrinth walk (Wensum Park, Norwich), creating improvised poetry, peace lantern attunement in stone circles (Alton Barnes, Stanton Drew, Rollright Stones, Mitchel's Field circle, Arbor Low) and creating photo albums for photo collages or videos for wider sharing of experiences and energies of these special places.



Sacred Dancing through the pews at St Mary's Church, Paddington, London.

Collaborative groups, exploring an Aquarian approach: In Aquarius, diversity and synthesis work together promoting 'collaborative visioning', and 'collaborative leadership' which are skills that we as a Trust are exploring. The Wheel of Life Project is facilitated by a collection of small groups, and we collaborate (with the Trust's secretarial and administrative support), to celebrate the turning of the wheel of the British Zodiac throughout the year, working with the reflective light of the sun on the moon. We can use this as an intuitive tool, to build our receptivity to the voice of Nature, and of the landscape with its communities. We seek to be a healing presence in collaboration with Nature and her subtle intelligence. At the same time, individuals and groups of two or three are exploring new areas suggested by friends, or where they have felt drawn to find out more while on pilgrimage.



Pilgrimage attunement at a holy well in South Devon, (2017) along the Arthur and Guinevere Line seeking the Aquarian Knights of the Round Table.

A simple sequence of turning group intuition into events: At the end of a year of events, in December, some groups are sharing facilitation amongst themselves. For one group, this involves getting together in December to review the year's activities. After a meditation linking the heart to the Earth and the Cosmos, they record their new insights and they discuss what part of the landscape has 'spoken' to them. A recorder takes notes of new ideas. After few minutes of silence for sending gratitude to the past year, a skeleton programme of seed ideas for the next year is discussed, with offers of individual facilitation. Draft details of time and place, and whether these need to be based on the monthly astrology or the eight festival times of year are agreed. The prospective programme is circulated, and a month of revisions made to it concludes with a mid January final programme. This works with the 'seed sowing' energy of Christmas and the winter-time of incubation that we experience in January.

Small group pilgrimage and meditation.

There is an 'in-breath' and 'out-breath' for all cyclic development, and this applies equally to our Wheel of Life Project, as we collect records and reports for future reflection from large and small groups. The year 2019 presents us with new options to link with other groups (see 'Soul Sounding' at Wells Cathedral this February and the work of Rory Duff's group activities at Stanton Drew: see <https://roryduff.com>). Also, some look to find how can we link with the landscape symbology through theatre. (See Mike Newton's talk at last year's annual conference, about development under way in Prescott to rebuild a 16th century playhouse in greater Manchester connecting two ends of the axis of our British landscape as we have come to know it.) The land and its narratives are offering us more options for research. Individual or small group exploration of new sites and sanctuaries might be as important as larger events. Both our listening to the landscape and our heart-felt intent are very important, perhaps initially held in a 'grail' of meditation, followed by quiet contemplative steps of investigation. This can lead to creative discovery and new ways of celebrating the 'good dream of beauty' for the earth and our incarnation as a human soul. From these roots, larger group events evolve in response to the needs of the landscape.

Exploring the symbolism of the zodiac's esoteric themes:

In Lincoln, following from the previous project 'Encircling the Land with Sacred Dance', a pilgrimage and dance event using the symbols of Virgo at the autumn equinox, celebrating harvest, 'the craftsman' and the fertility of the land. The river

Witham flows into 'The Pond' at the bottom of the city, from which the pilgrimage gathers 'creative energy' for a sacred circle dance ceremony.



Lincoln event involved sacred circle dancing round a 'harvest' mandala, a chakra pilgrimage using lanterns; honouring the art of our ancestors: sacred symbols on the decorative font.

Investigating initiatory symbols of the zodiac in Capricorn:

At the Annual Conference 2019 in Pewsey John Wadsworth gave us deeper insights into the Zodiac: "Turning the Wheel of the Zodiac: a Pilgrimage of the Soul". He presented the zodiac as a wheel of initiation, healing and transformation – twelve gateways to wholeness. He offered us a '*dynamic map of the soul's astrological journey*', which is something that we can carry with us as pilgrims, as we revivify the zodiacal landscape '*that is already hard-wired into our imaginations*'.

Peter Dawkins' (also gives us an insight into the initiatory qualities of the 'Knights of the Round Table' which we can develop consciously within ourselves and the 'King Arthur' at the centre of our psyche: Aquarius the 'Truth Seeker', Pisces the 'Mystic and Healer', Aries the 'Warrior and Pioneer', Taurus the 'Builder', Gemini the 'Innovator', Cancer the 'Guardian', Leo the 'Leader', Virgo the 'Craftsman', Libra the 'Mediator', Scorpio the 'Magician', Sagittarius the 'Teacher', Capricorn the 'Initiator and Consolidator'. These all relate to the 'Core Truths of the Western Wisdom Traditions': <https://www.zoence.co.uk>. In his view we are all actors on the stage of life, bringing to birth the mystery behind at the heart of our existence.

It is now known that the our annual conferences have been held in the 'Capricorn' landscape zodiac researched by Anthony Thorley, and it includes equidistant towns: Marlborough, Devizes, Amesbury, Ludgershall with a centre in Upavon where we find 'Scales Bridge' balancing a 20 mile diameter circle. Avebury and Stonehenge are two of the stone sanctuaries amongst several henge monuments within this landscape that tend to give a significant 'Capricorn' theme of precision earth structures with their callendrical role of time measurement. David Furlong's Marlborough Downs pyramid sits between Marlborough and Avebury like Merlin's hat, and outside Marlborough we find Merlin's Mound and a St George line passing through to Wilton. Anthony discovered much precision data, including that the Pewsey Valley contains pre-reformation churches that coincide with the major constellations of the Milky Way, with Milk Hill at its West end.

Avebury

The first pilgrimage in 2017 was to Avebury by a small group of pilgrims. As the largest henge monument of our islands, it inspires awe and wonder, and forms the north-western portion of the Capricorn zodiac. What is its mystery?



Working draft zodiac putting Stonehenge near the cusp of Capricorn and Aquarius (research group using Anthony Thorley's research, 2019). It is a mysterious landscape full of cryptic callendrical significance and many henges.



*Pilgrimage to Avebury 2017:
Was it its true significance – we can only attune our hearts and minds
and listen to our intuition together.*

In 2019 we held our Pilgrim's Weekend at Oare near Pewsey and investigated the Avon valley (including Amesbury and Old Sarum) landscape 'grail' as part of the Capricorn landscape. Through this area King Alfred gathered his troops and fought the Vikings of King Guthrum, before being crowned in Bath. Here are reflections from Ann Moon, the river Avon at Amesbury runs south after gathering water at the Alton Barnes springs:



Working with the elements - blessing rivers and springs and investigating their ancient significance:

Several events have explored river and spring blessings, after Patrick MacManaway (<https://patrickmacmanaway.com>) gave us some grounded examples in one of

our annual conferences. His articles on 'water whispering' can be found on his website: <http://patrickmacmanaway.com/video/>.

Cities and their rivers:

In York City a convergence of two rivers, Ouse and Fosse was discovered outside the south end of the heart-shaped city walls. We lit our lanterns there, took pictures, and walked into the city's heart bringing the river light with us to the Minster. We used meditation with lanterns at the energy sites to link the flow of heart energy, starting from the 'root' at the river junction.



The black dragon, York Minster, (2018) symbolic of the 'dark matter' of the earth and its four elements of earth, fire, water and air; the golden dragon seen as a creative synthesis.

York is a city with a history of founding our modern civilization, centered on the work of Constantine the Great whose family came from York, and who created major change in Christendom. We are now entering a new age of creative, multicultural spiritual expression, therefore we seek to enable the harmonious process of this change. Intuitive aspiration through open-hearted questing can be facilitated through simple ritual with candle light and maps.



Lantern attunement with map of city, preparing for pilgrimage in York, 2018 where we began with a lantern attunement to a guardian tree of the Rive Fosse.

The Thames Pilgrimages in London included St Martins in the Fields, a walk along York Water Gate the old boundaries of the Thames, and the poem 'A River's Tale' by Rudyard Kipling composed on one of London's bridges, and Eleanor's Cross at

Charing Cross, one of the acknowledged geomantic centres of the city. It completed at St Paul's Cathedral.



*The spirit of the Thames flows through the city,
and its story emerges from within the historic icons of the city.*

In Winchester 2017 we visited the Cathedral water shrine at the east end of the close walls, St Catherine's Hill water meadows, and the Cathedral well under the high altar.



*Water blessing, Winchester Cathedral, 2017, St Catherine's Hill and River Itchen
2018.*

Musical pilgrimages:

In the sign of Capricorn, three of us visited the spring source of the river Avon at Alton Barnes, Wiltshire, to honour our ancestors and the spirit of water through sacred sound.



*Improvised sounding the Avon springs at Alton Priors,
(together with voice, harmonium and Tibetan bowls), Winter Solstice 2019,*

From experiences of dowser Rory Duff who joined us at Stanton Drew, the Tibetan Bowls and the human voice are key to the expansion of the 'harmonic resonance' of the nodal crossing of ultrasonic pathways within sanctuaries. From his knowledge of

geophysics, rituals of old seemed designed to increase the beneficial effects of these nodes, and where they intersect 'grail-like' shapes are created that enhance human intuition: The vortices of low frequencies appear to make shapes similar to the grail cup, cauldron, spear or bowl: <https://roryduff.com/videos>

What is more the sounding bowls and chanting with Paneurhythmy and prayers increased the harmonic node of Stanton Drew large circle by two feet.



Offering the mandala flowers to the river at Stanton Drew, after the early morning lunar eclipse, January 2019

In Libra 2017, a group of singers improvised with song in Barsham church, where the sun appeared unexpectedly from a hidden window to light up the crucifix.



Singers 'Anam Cora' in Barsham Church, with the sunlight on crucifix, (2017).

New stories from the landscape:

In 2017 pilgrimages at Dulverton on the river Barle (Aquarius), at Arlingham on the river Severn (Pisces), we honoured the rivers and their memories and stories grew out of our receptivity to the spirit of place.



Pilgrimage on the River Barle, tree trunk shrine and pilgrim dog, Somerset,(2018).



Pilgrimage and enactment of story of fertility (Gk. 'Hieros Gamos' = 'holy marriage'), with a symbolic stone and group blessing on River Severn, Arlingham, 2017. [Report available]



Pilgrimage along the River Usk (Pisces), with candle shrine, Wales, 2018.



Natural mandala at Stanton Drew, (Capricorn) 2019, The Wrekin (Aries) 2018 using leaves, flowers, twigs, stones, candles or lanterns to honour the beauty of Nature.



*Candle and card mandala by the Thames, (Sagittarius) 2017.
The mandalas honoured the spirit of the river, and the emerging Wheel of Life
Project events, through which we aim to
'turn' the landscape energies into harmonic patterns.*

City Chakra walks

We would like to hear from those who are beginning to identify the chakras of cities, exploring ancient foundations, the water courses and old stones that remain from earlier times.

Lantern walks through a city at dusk captures a special spirit of place in the quiet corners.



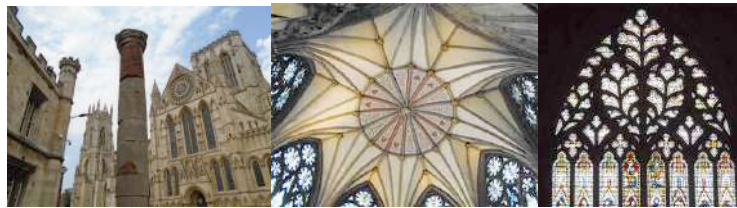
Pilgrimage round Winchester Cathedral Close, (Capricorn) dancing in St Lawrence's church, 2019.

Pilgrimages in Winchester, York, Lincoln and Colchester investigated the different energy centres that reflect different 'functions' of the city, such as water sources at the 'root' chakra, or sculptures and architecture that hint at hidden narratives.

In York the rivers Ouse and Fosse joined in the south, having woven their way through the city, giving added meaning to the heart-shaped city walls. This has always been a city of cultural significance, being the home of Constantine the Great's family.



Pilgrimage along York city walls, 2017 (Leo). The city boundaries with its towers has its own 'guardian' trees, create places of safety and civilization, for art, culture, relaxation and sciences to flourish.



York minster at the 'crown' behind the Roman column at the 'brow' chakra, with its architecture reflecting the heart shaped city walls and the trees standing guard along its streets and rivers. (2018)

Connecting different areas of the landscape:

Peak District: At Arbor Low (Cancer), the stone circle felt welcoming and inspirational for large group ceremony, its symbolic walls indicating the directions of correspondence to the wider landscape. Rowtor Rocks and Robin Hood's Stride with caves and rocky hill-crest paths carried different symbolic hints to their purpose.

In 2019 more connections were made with Ludd's Well where the group sang and sounded to the rock walls.





Arbor Low rampart with alignment 'groove', (2017), at Rowtor Rocks as places of initiation, and the Gateway stones to Robin Hood's Stride, (2018)

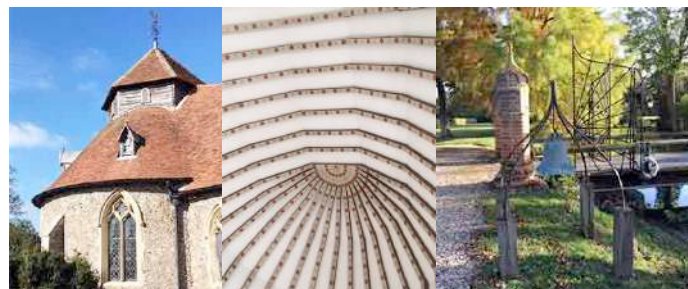
Essex (Scorpio)

In 2017 a city chakra pilgrimage in Colchester revealed its sculptural symbology of 'alchemy' appropriate to Scorpio (symbol of the magician and transformation): the Sphinx the representing of human incarnation in mammal bodies, and Mercury representing the imagination, eloquence, divination, or communication.



Pilgrimage through the city chakras of Colchester, 2017.

In 2018 a pilgrimage to the Templar round church at Little Maplestead expanded our knowledge of the landscape connections.



Pilgrimage (in Scorpio) to Little Maplestead Templar round church emphasizing the heart chakra, with roses on the ceiling; and Stanley Hall, (2018). Artwork often taps into the hidden symbolism in the landscape.

The hidden modern symbolism of the landscape:

A pilgrimage to St Helens, Lancashire: where the site of a coal mine has been developed into a park, with sculptures that enhance the symbol of 'a good dream of the future'. Here seats were designed by local school children. The community's grief at losing their work in the mine has been translated into the head of a young girl with her eyes closed, dreaming of a better world. The Taurus/Gemini cusp in the British Zodiac represents the path of the 'Milky Way' constellations as they appear in the sky and represented on land. See Mike Newton's talk at the Gatekeeper Conference 2018:

<https://www.youtube.com/watch?v=6Ho4Q9Cqr6Q&feature=share>



Paneurhythmy at St Helens, (Taurus), 2018.

The Sculpture we call 'The Dream' represented the 'dream' of future of healing the past, nestled in the park together with sculptures designed by school children. The display was the miners' motto: *'Ex Terra Lucem: from Earth comes Light'*.



Pilgrimage to Wensum Park Labyrinth, Norfolk (Libra).

This group is led by singer Caroline McCausland and they celebrate the four solar festivals in this landscape.

Poetry in the landscape: Listening to the landscape and the teachings of Nature through creating art forms:

In Sarah and Peter Dawkins' research, Cygnus, which stretches from the Rollrights (and its legend of the king's journey to power) to Banbury in two sections, it found to contain myths of royalty, and relates to the 'turning of the wheel' of sovereignty. Sovereignty is very much to do with our relationship to the land in which we live. Shakespeare's plays connect the arts to the core truths of life and wisdom. Using

mandala, Paneurythmy and circle dancing, poetry and painting individual groups find many ways of celebrating beauty and wisdom in Nature. Similarly in the Dartmoor zodiac, the South Devon group discovered Kings Tor, which connects Aquarius and Capricorn in the centre of the landscape, and captured its statuesque beauty in photos and poetry.

Through our pilgrimage at the Bullstones Circle, Macclesfield (Gemini), we carried lanterns and composed poetry to enact the 'innovative imagination and communication' of this zodiac sign. Lighting our lantern, we began to write our poetry. The Macclesfield Zodiac sits on the cusp of Taurus and Gemini, and on the axis line to the cusp of Scorpio and Sagittarius, signalling the route of the Milky Way in our star map.



*Light speaks to light – a light cradle at the centre stone,
the sheep stand guard on an alignment to over-lighting Shining Tor (2018) .
Pilgrims' poem to the spirit of place:*

*The dreaming landscape
awakens within our walk,
within our poetry,
and our lacing lantern light,
and the sheep sleep,
the crags leap
as we lay our shadows down.*

*The nettle feels the wind,
Scudding cloud shadows,
Sunlight, sharp shadows.
Wind waving grasses,
Stones and sheep wool,
Hold the majesty of the holding hills.*

*Happy scudding-cloud shadows
Sweep with billowing sails,
Across table-top skyline,
Anchored deep in rushes.*

*Concrete spire,
A dried grass cross in the sand,
Open, exposed.
You are part of this process.*

*Blue haze horizon stretches away,
Sunlight, sharp shadows of waving grass,
Stones and sheep wool.
Stone-still silence,
Welcome.*

*Whatever you have done or not done,
The nettle feels the wind:
I am still here,
Whether or not you believe
Is nothing to me.*

Art is the cradle of wisdom: The wisdom of the landscape or 'spirit of place' comes into focus through improvisation and imaginative flexibility, the key skills bridging the polarities of Gemini the divine twins. It is symbolic of the 'two voices' within our throat chakra with its altar major, one responding to the impulse of intuition and the other questioning the relevance of guidance in a grounded context. By listening to the two, we ground our intuition with precision and timing, the qualities of rationality. Our two inner voices engage us with our 'inner warrior' (Aries) and develops our 'inner guardian' (Cancer), artistically building love and friendship (Taurus) as the 'friends' of logic and rationality.

Walking the steep path – hills of illumination:

The pilgrimage on The Wrekin (Aries) was steep and lined with guardian trees. We contemplated the protection of inner resilience on the hard climb of existence. Trees that guarded our path gave us the inner scope of reflection into our own organic resilience through life.



*On the way, the path of light protected by guardian trees.
At the top the horizon and valley below created an illumination
of clear sightedness and grounded rationality which the 'warrior/pioneer' Aries brings:
(2018).*

Honouring and researching the spirit of our times - Aquarius:

At Stanton Drew on 21st of January 2019, we entered the three stone circles that had witnessed the lunar eclipse on the cusp of Capricorn and Aquarius, with the moon in Leo guiding our inspirations towards resolving issues of leadership. The sun rises after a blood moon, the stones glow pink and reflect a new dawn.



The large stone circle at dawn after the eclipse, (2019)

Research and exploration

Our innate spirit of curiosity and awe in Nature provides us with deep motive to explore and discover the secrets of growth, beauty, natural wisdom and a spirituality, which matures through Life's evolution itself. In questing and raising an enquiry into what draws us along our way, we express a quiet joy of being on a creative path through the unknown to greater knowledge, self-expression and illumination of our understanding.

The following are basic details of events over the last three years, for which there are some short reports and photo-collages available on request:

CAPRICORN:	Winchester – Circle Dancing and Chakra Lantern Walk Rollright Stone Circle – pilgrimage with lanterns – extended to Cygnus ('the pure poet') which encompasses Stratford, Warwick and Banbury. Alton Barnes and Alton Priors – music improvisation at the Avon springs
AQUARIUS:	South Devon – Circle Dancing and Pilgrimage SW Somerset – Pilgrimage along the River Barle Wells Cathedral – Circle Dancing Pilgrimage to Stanton Drew Stone Circles with Paneurythmy and picnic, Somerset Dartington and the River Aller, S Devon
PISCES:	Arlingham – pilgrimage across the River Severn and symbolic stone story enactment Leominster Priory, Herefordshire (River Lugg) – pilgrimage River Usk, Wales – Pilgrimage River Barle, Somerset – Pilgrimage St David's Cathedral, Pembrokeshire – circle dance Pilgrimage along the river Severn estuary and Heddon River Valley estuary, Exmoor
ARIES:	Mitchel's Fold Stone Circle, Shropshire – Lantern pilgrimage The Wrekin, Shropshire – pilgrimage Pilgrimage in Bridgnorth, Severn Valley
TAURUS:	Paneurythmy at St Helen's Lancashire
GEMINI:	Bullstones Stone circle, Macclesfield - Pilgrimage with lanterns and poetry, local zodiac River pilgrimage in the Macclesfield landscape zodiac.
CANCER:	Arbor Low Stone Circle, The Peaks – lantern pilgrimage Rowtor Rocks – pilgrimage

	Robin Hood's Stride – pilgrimage
	Ludd Well, Pilsbury Castle and the River Dove
LEO:	York – city walls pilgrimage
	York – city chakra lantern pilgrimage and river blessing
	Thornborough Henges – pilgrimage and Paneurythmy
VIRGO:	Lincoln – chakra pilgrimage and Cathedral circle dancing
LIBRA:	Barsham Church, Norfolk – sacred sound
	Wensum Park, Norwich - labyrinth walk
SCORPIO:	Colchester, Essex – city chakra walk
	Little Maplestead and Stanley Hall, Essex – pilgrimage
SAGITTARIUS:	River Thames, London – river pilgrimages
	St Mary's Paddington, London – circle dance
	Charing Cross, London – pilgrimage to the new site of the London Stone
	Petworth and the South Downs
	Old Winchester Hill and the Meon Valley

In 2019 additional landscape connections were made with original sanctuary and city pilgrimage sites. Groups 'walking and talking' along rivers, city paths and ancient sanctuaries brings new knowledge of the historical symbolism of our culture that was left by our ancestors.

Longer reports of some events will be available on request in future. We are developing themes such as the role in the landscape of the symbol of Cygnus: the 'Pure Poet', which holds wisdom. The role of the arts in creating and celebrating sacred space is a part of how we can re-envision pilgrimage styles that offer opportunities for both walkers and those who 'heal the land and ourselves' in other ways.

In 2020 we hope to offer additional support for local groups concerning the heart-felt language of the land, sacred art forms of healing and celebration, and the significance of pilgrimage in the light of current changes. Be prepared to share your landscape discoveries with us, together we inspire each other.

Please let us know if you would like demonstrations or activity sheets on how to create natural or candle mandalas, poetry or lantern walks, musical improvisation blessings, dance or photo-collage. There are many simple meditational attunements in landscapes, which have been used by different groups, and which help focus the inner sense of the spirit of place and the 'blessing field' of our heart's visualization. Some activities can be found in the Gatekeeper Trust's 'Pilgrim's Handbook' and song-book, copies of which can be purchased when available.

MAKE YOUR OWN MANDALA:



Isle of Man sacred site and green lane mandala.

INTERPRETATIONS OF THE BRITISH LANDSCAPE ZODIAC

**MAKING ARTISTIC INTERPRETATIONS OF THE WHEEL OF LIFE HELPS US
UNDERSTAND THE TRUE MEANINGS BEHIND THE ARCHITECTS OF
TERRESTRIAL STAR MAPS OF THE WORLD:**

Creative re-imagining of the astrological Zodiac, Round Table and the ancient 'wheel of life' initiation cycle recreates the universal 'mandala' traditions of world religions, symbol of our 'inner grail'.

Different interpretations for different purposes:



A Celebration in North Devon.



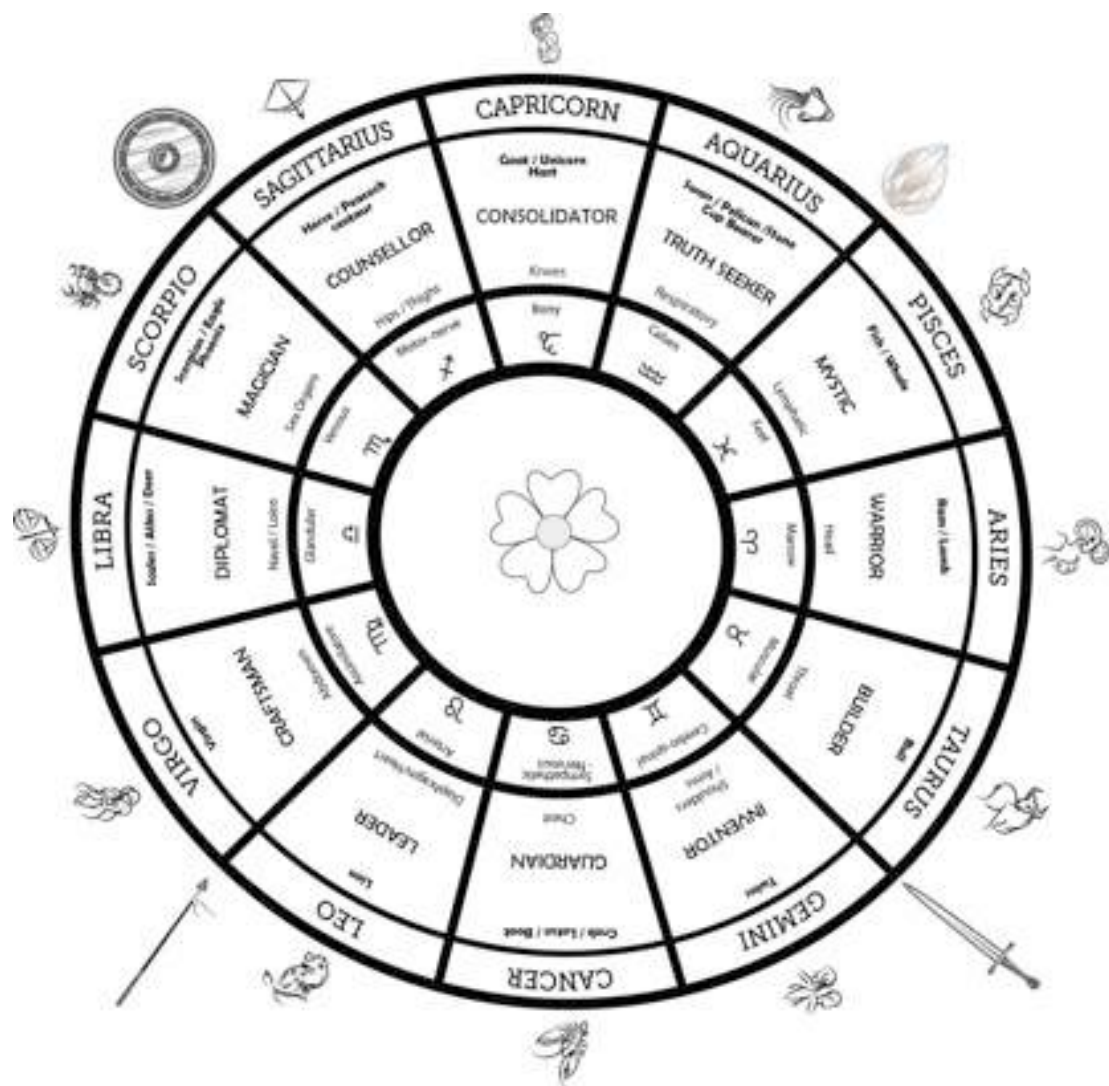
*British Landscape Zodiac map as used in a blessing meditation
at Purley Chase 2016 lead by Peter and Sarah Dawkins.
[graphics by Peter and Sam Dawkins].*



*The 'unequal' Zodiac of Britain
(graphics by Peter and Sam Dawkins)*



*The Gypsy Switch of traditional horse fairs around Britain
(research and graphics by Peter and Sam Dawkins).*



*An artistic version of the Zodiac as King Arthur's Knights of the Round Table.
 (Created by Peter Dawkins - graphics by Caroline Danby)
 Each knight represents a quest, a creative power or a group of better selves.
 Working with our 'inner round table' of Selves or sub personae
 was proposed by Robert Gilman's 'Bright Future Now'.*

From Zoence workshops we learn that In the Mystery tradition, the wheel of life represented cycles of transformation of consciousness, in which we learn to love, understand and serve, thereby building our own light body and that of the Planet. The seasons represent the earth's own cycle of growth, which in turn mirrors our own seed-to-flower-to-fruit process of enlightenment.
 For more graphics interpreting the 'Wheel of Life' visit: www.zoence.org.

*Other researchers of terrestrial star maps
and the possible purpose of ancient sanctuaries are:*

David Furlong – ‘Keys to the Kingdom’ – showing that ‘with highly sophisticated astronomical, mathematical and surveying knowledge was living in Britain three thousand years ago’ (amazon.co.uk)

Mary Cain – ‘The Kingston Zodiac and ‘The Glastonbury Zodiac: Key to the Mysteries of Britain’ – [Gatekeeper Trust archives].

Rory Duff – ‘Grail Found’ - <https://roryduff.com/rory-duff>

Jean Richer – ‘Sacred Geography of the Ancient Greeks: Astrological Symbolism in Art, Architecture’ 1994 [Amazon.co.uk]

Anthony Thorley – ‘Landscape Zodiacs of Britain’ (DVD) [Megalithomania].

John Wadsworth – ‘The Alchemical Journey: A Glastonbury Zodiac Mystery School Adventure’ - www.thealchemicaljourney.co.uk

If you are interested in joining a group near you, please visit our website: www.gatekeeper.org and contact the Secretary for more information. This project is a work in progress and each local group provides their own interpretation and research of landscapes in their area. Ideas arising from the group as to when, where and how to listen to the needs of the landscape, celebrate the seasons and offer individual gifts, knowledge and insight to guide the events collaboratively.

November 2019



The Wheel of Sacred Site cards 2017
(Charlotte Yonge and the facilitators)

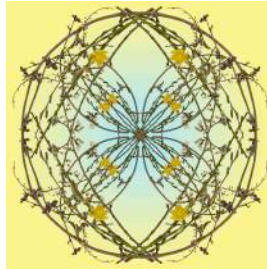
.....

IN LOVING MEMORY

... of our much loved, inspirational and accomplished gardener/trustee
Fiona Hopes ('Song of the Earth') who died 21st October 2019:

FIONA'S MANDALA:

*"There's a part of the sun in an apple, a part of the moon in a rose,
There's a part of the flaming Pleiades, in everything that grows."*



*We gratefully acknowledge her deep study of Art and Science as the roots of all
knowledge, gardens, and the Sacred Geometry of the Wheel of Life:*

